

SUNGANI



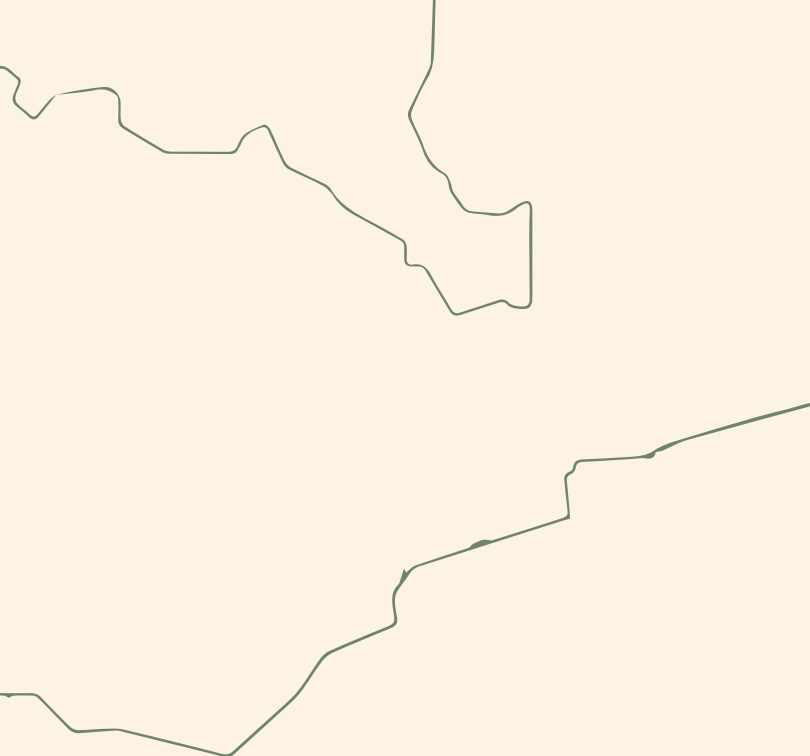
S 13°27'55.69"
E 31°23'14.86"

SUNGANI

THE ADVENTURE-BASED LUXURY DESTINATION IN ZAMBIA

PHOTOGRAPHERS: MICHAEL DAVY @MICHAELDAVYPHOTOGRAPHY, ADRIAN LOUW @ADRIANLOUWPHOTOGRAPHY.COM





.001 ABOUT

From our family to yours. Welcome to Sungani Lodge and Kulandila Camp. This is the culmination of a dream, hard work and a family affair.

A passion for Africa and each family member's unique set of skills have wrought Sungani Lodge and Kulandila Camp. Transforming this area of the park from a state of neglect into something quite extraordinary.

The journey kicked off early in 2019. A father and son, along with a few local people, arrived near nightfall and had to spend the night in what were the old ruins of the site. The first few months had them sharing their accommodations with bats, snakes and various other creatures! Cooking on a fire, bread freshly baked in the ground, the story of Sungani had begun in this untouched corner of Africa.

By April the project was underway and many people from the local communities were employed again, or for the very first time. Everything: from the architecture

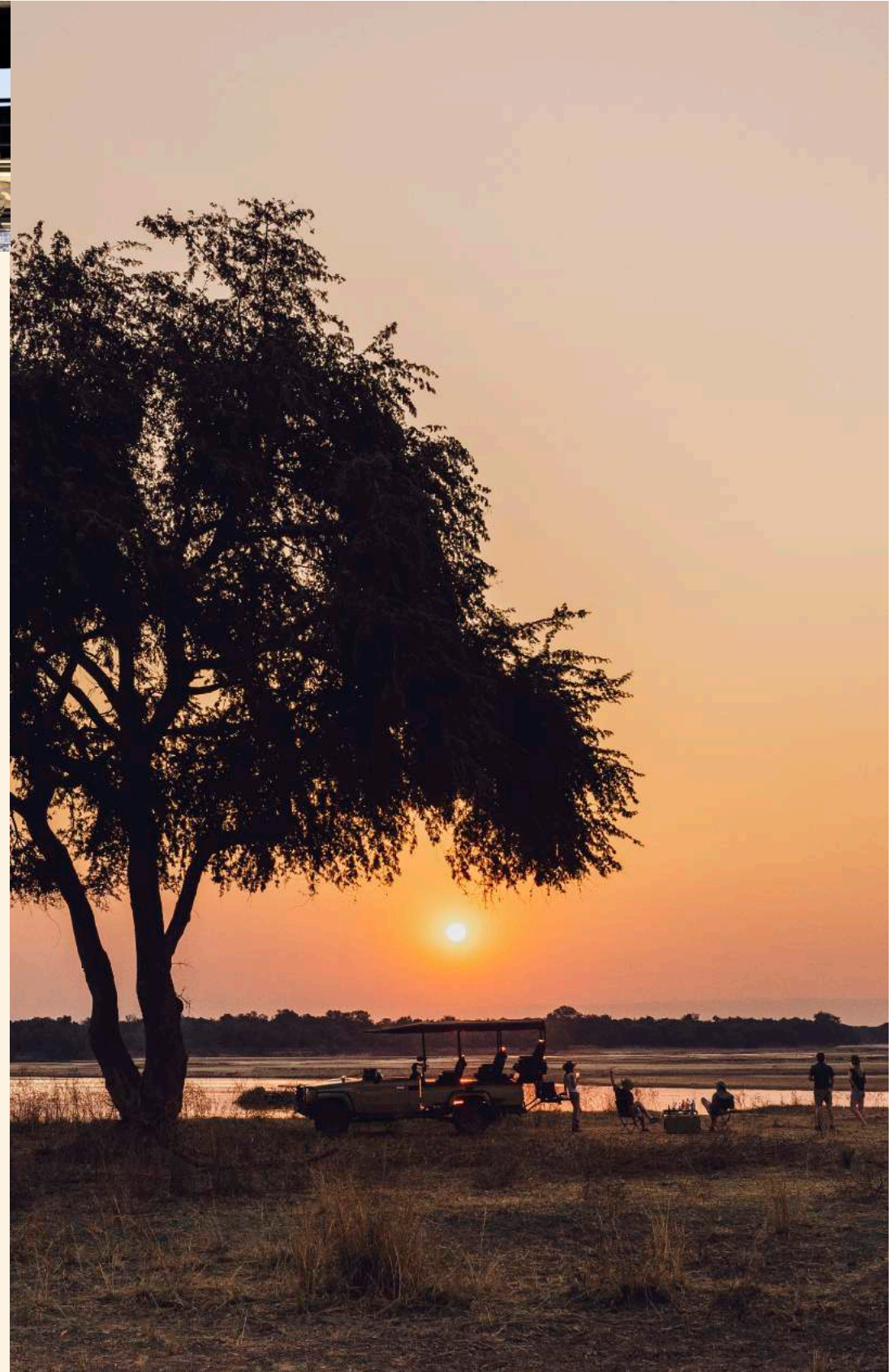
and interior design down to the last detail on each scatter cushion has truly been a family collaboration and much of what you see has been created on site.

With Zambia being regarded as one of the last true wildernesses, we are deeply grateful that we have the privilege to call Sungani our home.

Every visitor helps to contribute towards the Sungani promise as we embark on this journey to become custodian and keeper – enabling us to give back now and in the years to come.

We are not one voice; we are a family that will continue to grow.

From *Paul, Ryan,
Darrell, Carly,
Michael, and Jordan*
– welcome to our home.





.002 OUR COMMITMENT

Keeping these precious spaces safe is at the heart of our intention. In time, the effort will manifest in several ways.

A key factor to conservation is the way those of us who live in these wild spaces interact with the wild animals that too call this home. Human populations continue to increase, pressure on resources mounts and so it is crucial to invest in ways that allow for local populations to understand the benefits of anti-poaching and conservation.

This begins with employment and skill transfer which in turn allows people to benefit from the wildlife. We hope over time to inspire young people from our local communities to join the fight against poaching through careers as safari guides, game scouts and in tourism-related careers. The empowerment of local communities through employment has started, and in the long term our goal is focused on transferring skills to school leavers.

As a family, we are dedicated to restoring and protecting Africa. When we first reached this place, the logistics were overwhelming. It had been written off as “too challenging, too remote.”

Then we felt the magic. From extraordinary wildlife encounters to vast untouched tracts of wilderness, we offer you the ability to disconnect in order to reconnect with yourself and with nature. To get to know the wonderful, warm Zambian people: their heritage and culture. The commitment is all-encompassing and never-ending, playing our small part

in ensuring we are all the beneficiaries of a better world. Along with our partners in conservation, namely CSL, ZCP & DNPW, we are responsible for projects that will make a tangible difference for generations to come. Demonstrating through our actions that if we touch the earth gently and with respect, we will all pass on a better future for the people, flora and fauna of one of the few remaining places of natural wonder.

Our commitment to safeguarding the continent's wildlife can now begin bearing fruit while we are instrumental in creating economic empowerment and skill acquisition among the community in which we have the privilege to live.

Sustainable tourism must be the goal. There is no other option. This in turn will ensure that the wherewithal needed to conserve and protect is available to continue to improve the lives of all. Our aim is to give our guests new knowledge through experiences. To give them a deeper appreciation of what their contribution makes possible.

The lodge and camp are run completely off solar power with a back-up generator if required. Both properties have a filtration plant to clean the borehole water which is then further treated through reverse osmosis making it safe (and delicious) to drink.



SUNGANI

(*suhn-gah-nee*)

from the blended Chichewa language, meaning custodian or keeper.

Sungani Lodge is set in the natural beauty of Zambia's South Luangwa National Park. It is situated on the edge of an enormous lagoon. Sheltered by magnificent indigenous trees, the lodge blends seamlessly into the landscape. Carefully curated interiors showcase our love of raw materials, classic lines, and longevity. The entire lodge is built on elevated decking, affording the ability to wander around during the day.

The main area of the lodge has a variety of living spaces and a pool where your time is uninterrupted, and the space is yours to do as you please. The considered library area provides a space to make use of the charging points. You can download your photos or curl up and read a book. Challenge someone to a game of chess at the antique chess table or just relax with your thoughts. There is a separate WC, curio shop and well-equipped and air-conditioned gym located about 100M from the main area. There is VSAT

COMPLETE WITH

- Indoor and outdoor seating and lounging
- Private deck and plunge pool
- Indoor bathroom - *slipper bath, shower, toilet, and basins*
- Outdoor shower and toilet
- Mosquito nets
- Large closet with plenty of hanging and storage
- Tea/coffee making facilities and minibar
- Aircon and ceiling fan
- 24-hour power (*power outlets are 220V*)
- Complimentary laundry service
- Luxury linens
- Safe
- Amenities - *bathrobe, slippers, shampoo, conditioner, body lotion, bath foam/salts, shower gel, magnifying mirror and a hairdryer*

WIFI in the tents and main area. We are wheelchair friendly with one caveat being that doorways are 80cm wide.

The custom designed tents are set atop polished concrete floors to create a cool environment and offer approximately 1150 square feet indoors to relax in. The design is simple and understated, furnished with elegance and natural textures. The interior focuses on comfort and warm colours, with a collection of unique pieces and details. The bathroom has a gorgeous slipper bath, fluffy towels, fresh soaps and salts.

The lodge is limited to seven luxury guest tents comprised of 4 King rooms and 3 Doubles (Queen beds). One double is configured to accommodate 2 adults and 2 children. You can also experience the luxury of the Directors' Tent complete with WiFi, DSTV, Nespresso machine, outdoor sleeping and more.





.004 WELCOME TO KULANDILA CAMP

Kulandila (koo-lann-deelah)

to receive or welcome.

A little further upstream is the smaller of the two properties, the beautiful Kulandila Camp. Kulandila is situated on the magnificent banks of the Luangwa River and backs onto a lagoon.

The open-plan main area faces the mighty Luangwa River. There is an adjoining swimming pool and viewing decks with vast vistas of the Luangwa. The style remains contemporary and features large leather chairs, oiled teak furniture and brass finishes. There is VSAT WIFI (only in the main area).

Four elevated tents are linked by distinct pathways which allow you to meander to the communal areas. The traditional safari style tents offering approximately 460 square feet of indoor floor space are set on a wooden platform with an adjoining veranda. This combines with gorgeous white linen, textured cushions and oiled teak furniture. The outdoor slipper bath provides an oasis to unravel your thoughts and soak in the sights and sounds of the nearby river. Each tent is made up of single beds, which are combined to form a king configuration and can easily be separated to form twin beds.

COMPLETE WITH

- Indoor daybed and outdoor seating
- Adjoining private veranda
- Indoor bathroom - shower, toilet, and basins
- Outdoor bath with a view
- Mosquito nets
- A decent-sized cupboard with hanging space and shelves
- Tea/coffee making facilities
- Ceiling fan
- 24-hour power (power outlets are 220V)
- Complimentary laundry service
- Safe
- Amenities - bathrobe, slippers, shampoo, conditioner, body lotion, bath foam/salts, shower gel, magnifying mirror and a hairdryer



We will provide discovery, adventure, relaxation and insight as you are placed in the hands of our qualified guides for every activity. Each day ends with a toasting an unforgettable African sunset.

This area was inaccessible to our conservation partners for many years, and we have worked very hard since early 2019 to develop the area and carefully habituate the animals. Our careful and patient work with the prey base around Sungani and Kulandila in the remote Lusangazi sector has become well established. This in turn has had a knock-on effect, causing the predator population to re-establish itself.

DURING YOUR STAY YOU ARE LIKELY TO SEE BUT NOT LIMITED TO:

- Large herds of Elephant and Buffalo
- Thornicroft Giraffe
- Lion
- Leopard
- Hippo
- Crocodile
- Puku, Impala, Kudu and Zebra
- Roan Antelope and Lichtenstein's Hartebeest (*elusive creatures, usually only seen in the drier months*)
- An abundance of birdlife to tick off your checklist
- Flora



WANDER IN THE WILD

The South Luangwa National Park is home to the 'walking safari' and enables up-close encounters. Imbibe the bush scents.

HIDEOUT

Spend a while up close and personal with the wildlife. Hides are set up near the lagoons and natural waterholes where there is an abundance of wildlife and birdlife. Patiently waiting for the perfect close-up photograph in a comfortable and intimate environment.

BOAT CRUISE

Boating on the wild Luangwa in the green season (January - March). You will set out on the boat in the morning or afternoon to experience the mighty Luangwa River in all its glory. The bird watching at this time of year is unbeatable.

DAY TRIP

This is your journey and if a vehicle is available for exclusive use, we can set up a day out for you. Our experienced guides can take you further afield to areas that are seldom explored. Enjoy a delicious, packed lunch and cold drinks in the heart of Africa.

GAME DRIVES

Enjoy a game drive in one of our luxury cruisers outfitted with individual seats and custom suspension. Let your guide take you on a morning or afternoon/night drive to explore the beautiful area. They will be able to respond to your interests and curiosity and generously share their knowledge of the wildlife, habitat, and landscape.

BUSH MEALS

An authentic and extraordinary experience. Our staff will create a beautiful menu and set everything up for you.

UNWIND

We know when you are on safari, there are many things worth getting out of bed for, but we want you to feel at home with us. Enjoy the comforts of your room – take a nice long bubble bath while you soak up the sights and sounds. Or come join us on the main deck and lie by the pool. Read your book, sip on something cold and enjoy the African sunshine.

PHOTOGRAPHIC EQUIPMENT HIRE

You can elevate your safari by hiring our top of the range camera equipment. We are proud to feature a full line of the latest Canon RF and Nikon Z mirrorless camera bodies and lenses. We have everything from a close up 100mm macro shot to a 1200mm bird in flight covered.

Packing for an African Safari is quite unlike any other trip and can be a challenge for first timers.

Here are a few of our recommendations –

- Passport. A copy of your itinerary. Emergency contacts stored in your phone. Travel insurance. eTickets. Any required inoculations and attendant certificates.
- No ATM's in the bush! So, a small amount of cash can be useful. US dollars are widely accepted.
- Camera and binoculars – remember your memory cards and perhaps a spare USB flash drive.
- A good torch (flashlight) is a great idea. You are guided back to your tent at night but having your own will come in handy.
- Duffel or soft sided bag. Consider waterproof version during the wet season in Africa.
- Weight restriction on small aircraft is 15kgs.

A complimentary daily laundry service will help you minimise your clothing needs. A range of African Earth natural guest amenities are provided in every tent. Layering is just plain practical, so plan to zip off, add and remove as the temperature changes throughout the day. Consider zip off trousers as your 2 in 1 space saver.

June to August can be chilly when the sun goes down. In the chilly wetter green season, consider waterproof clothing, duffel, and dry bag.

The hat. It really should do a few things well - Provide complete protection of your face and neck.

Be lightweight and permeable so the heat can escape. Be absorbent inside and waterproof outside.

Minimal lightweight earth toned clothing. Avoid blue, black and purple because the insects are attracted to these colours. Avoid bright colours that make you very conspicuous to the wildlife. As a safety measure these clothes are not permitted on bush walks. Some countries discourage camouflage print. White – well who wants to a) stand out or b) get dirty before breakfast! Wickling “tec” fabrics that dry rapidly and keep you comfortable are a great plan. Oh, and think sun protection too.

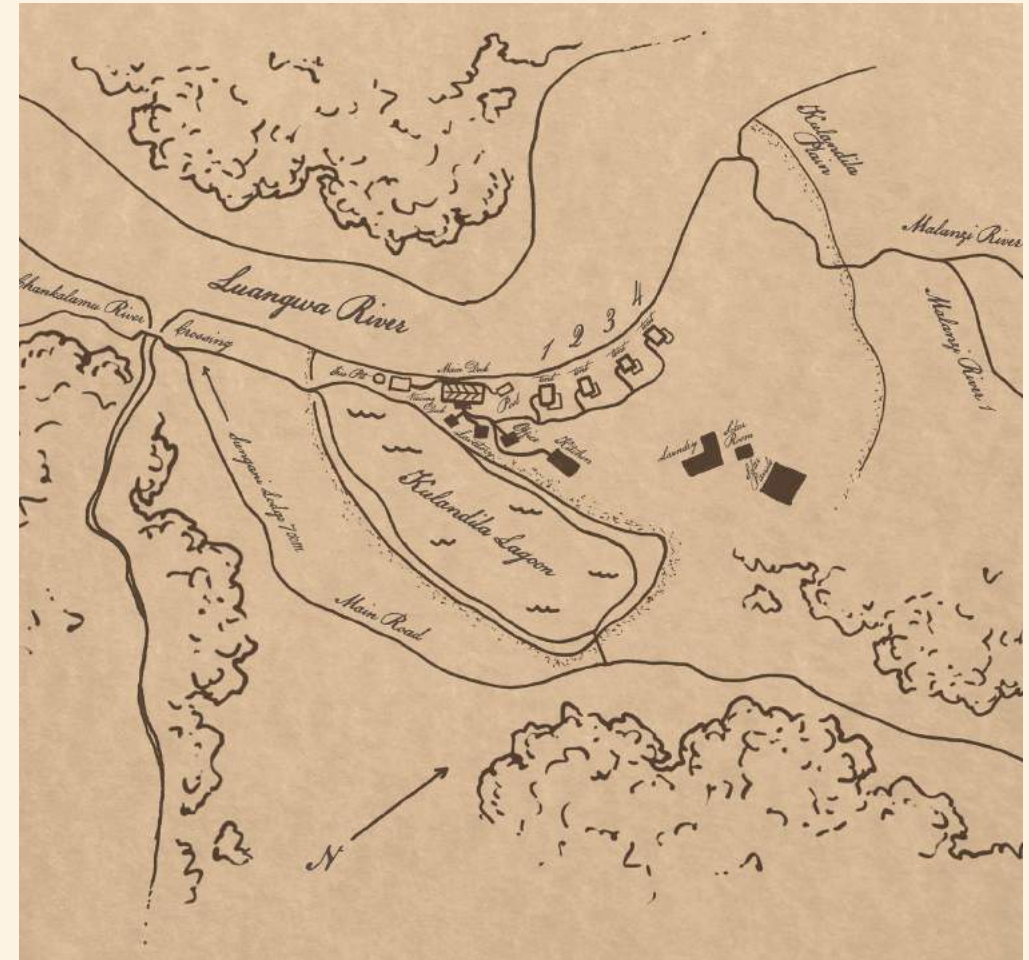
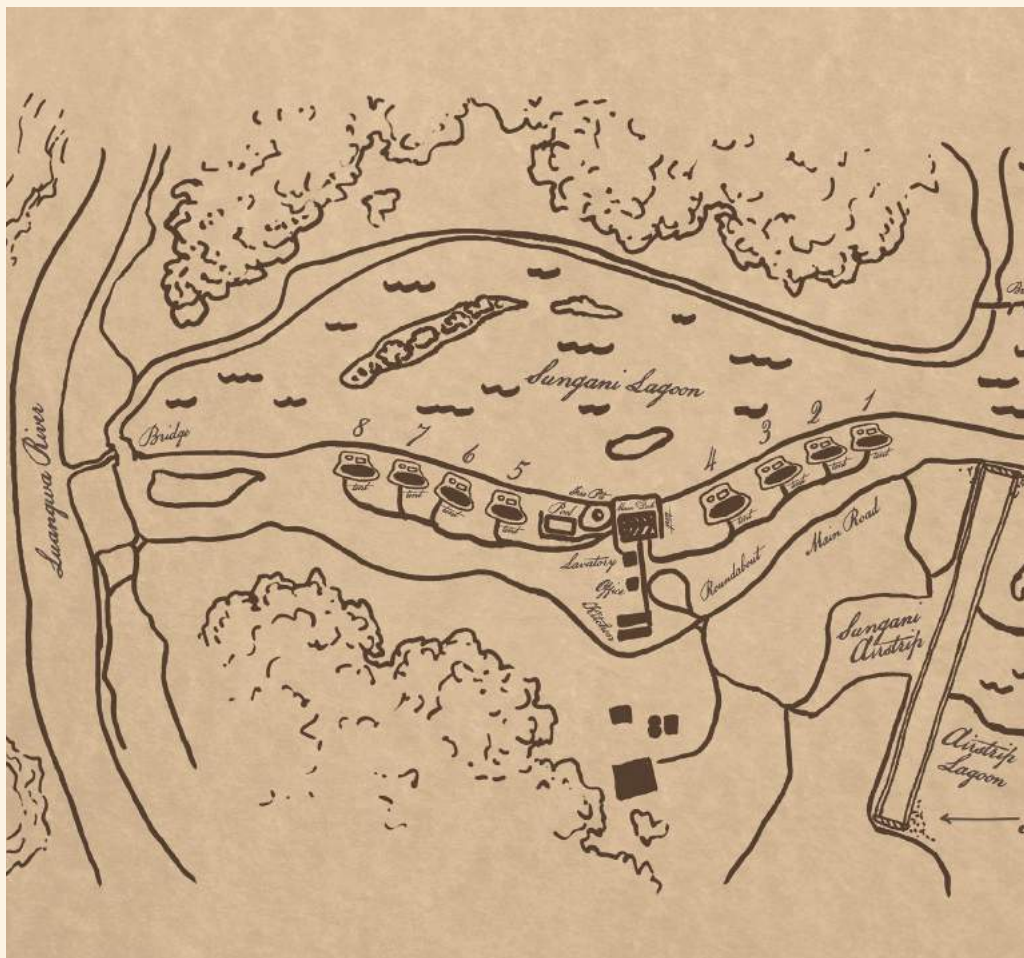


SOUTH LUANGWA NATIONAL PARK IS IN EAST ZAMBIA'S LUANGWA RIVER VALLEY.

ADDRESS: South Luangwa National Park, Zambia

AREA: 9,050 km²

ESTABLISHED: 1972



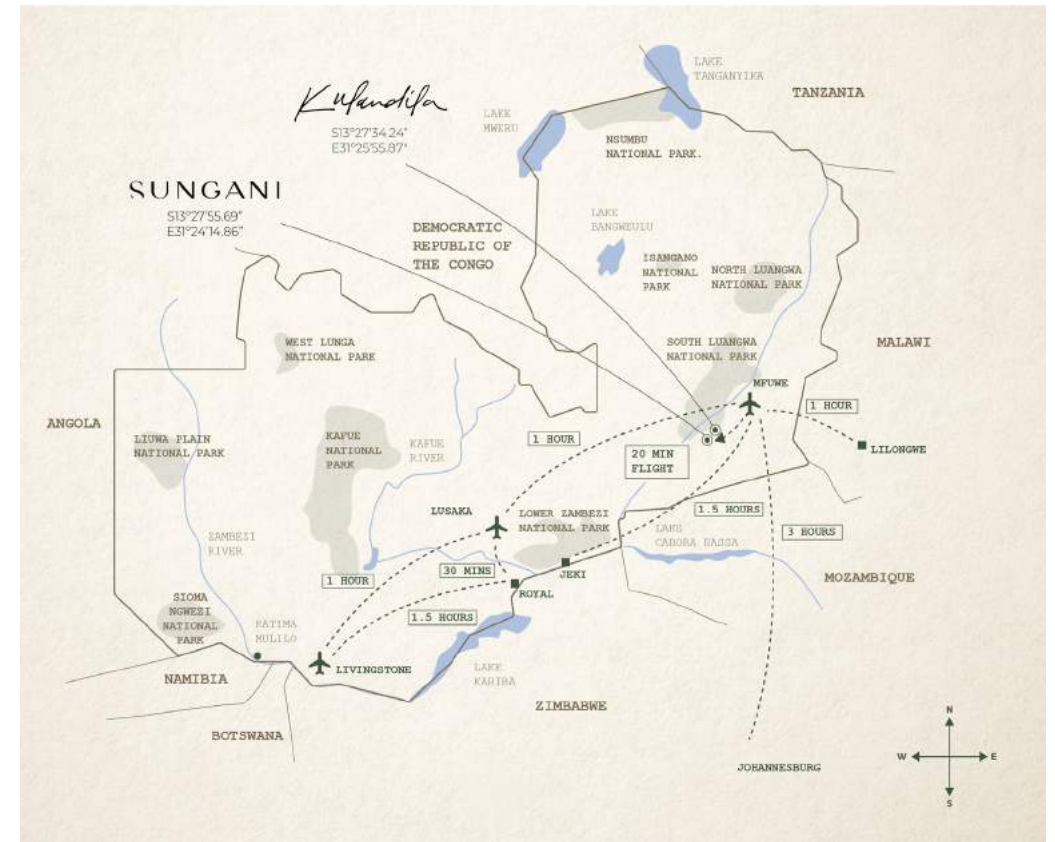
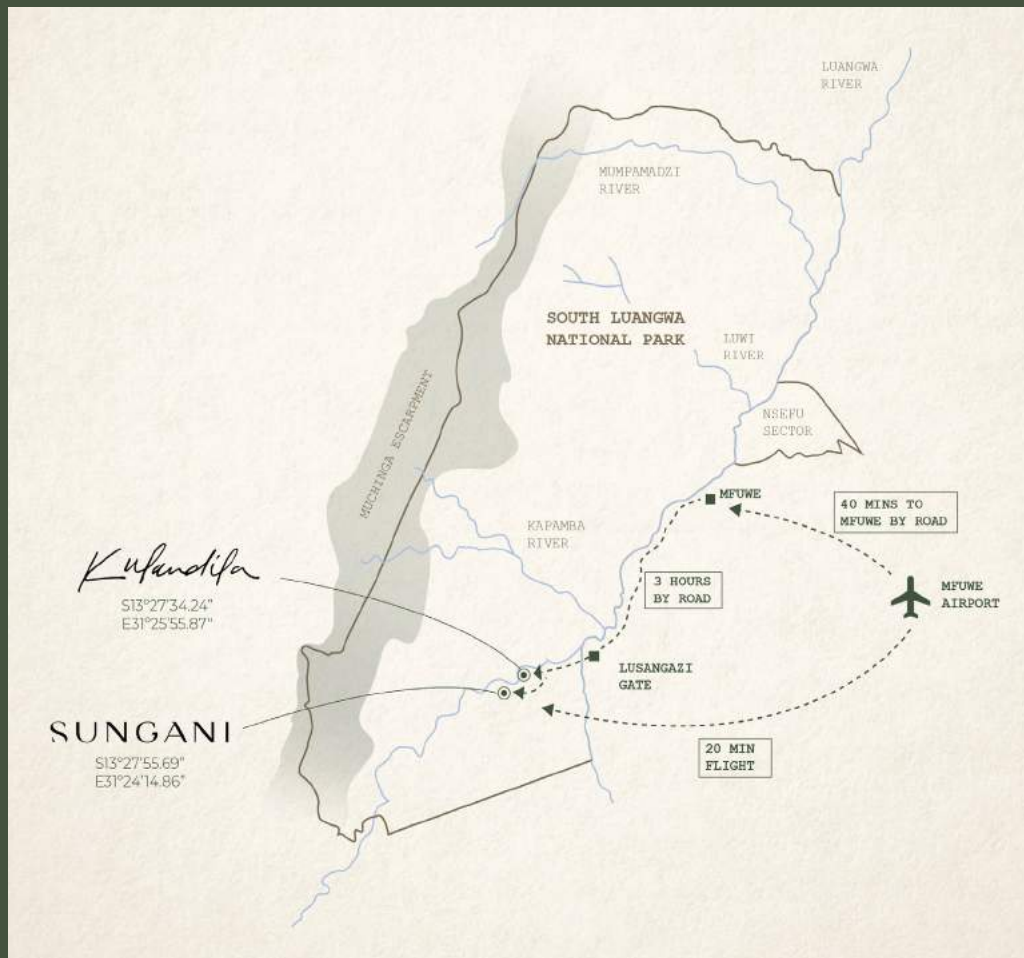
The Luangwa valley can be found at the end of Africa's Great rift valley in North Eastern Zambia. The Luangwa River begins its 770km life in Lilonda and the Mafinga hills forming one of the major tributaries of the mighty Zambezi river. As the Luangwa flows further south through the National Park past Mfuwe and down to the southern reaches of the park you will find the Lusangazi sector of the South Luangwa National Park. Here you will find yourself in the remote and exclusive paradise that is Sungani Lodge and Kulandila Camp.

SUNGANI -

S 13°27'55.69"
E 31°24'14.86"

KULANDILA -

S 13°27'34.24"
E 31°25'55.87"



Sungani Lodge is the most southerly camp in the South Luangwa National Park. Just a little further upstream is our beautiful Kulandila Camp. The properties are 6kms apart by vehicle.

Most international guests would fly via Johannesburg's OR Tambo to Lusaka's Kenneth Kaunda International Airport and then onto Mfuwe International airport. You can also fly via Dubai, Doha or Malawi direct to Lusaka. Once in Mfuwe you will then fly to Luamfwa airstrip in the Sungani Plane (Cessna 206) This is an approximately 20-25-minute flight. If preferred, collection can be done by road which will take around 3 hours – think of it as a long game drive! We are roughly 70 kilometres from Mfuwe Town. Private chartering directly to the airstrip is also possible.



LUAMFWA AIRSTRIP

S 13° 28'18.9"
E 031° 23'05.3"



.009 THE FINER DETAILS

The cuisine is clean and simple, while remaining sensitive to the traditional and delicious. We are extremely remote, and we endeavour to source and support local as much as possible. Please let your agent or our reservations team know about any dietary or allergies in advance.

At Sungani Lodge and Kulandila Camp we serve an à la carte

breakfast. Lunch is a relaxed, unfussy delicious spread, served on the main deck. Afternoon tea, a tribute to a bygone era, is also served out on the main deck. Our dinner menu changes seasonally, and we aim to introduce African flavours where we can. Our focus is on locally sourced meat, vegetables, and fresh garden herbs.

OUR TARIFFS INCLUDE - *PPPN sharing rates include*

- Accommodation
- Flights from Mfuwe Airport to Sungani and return
- Meals, laundry, drinks (*excluding top-shelf beverages*)
- Professionally guided safari activities
- VAT and service charge

OUR TARIFFS EXCLUDE

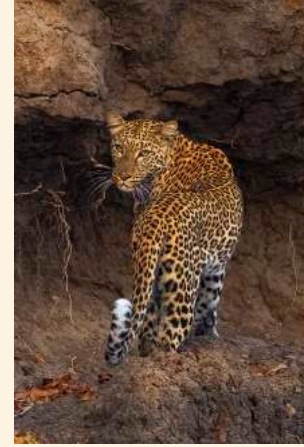
- Lusaka meet & greet - city transfers
- Top shelf beverages
- Gratuities, visas and airport departure taxes
- Flights (*aside from Mfuwe to Sungani airstrip and return*)
- \$115 tourism / conservation / DNPW fees and levies. These fees are non-commissionable. DNPW fees are subject to change. If an increase is levied by DNPW before the start of the safari this amount will be passed onto guests. This fee is applicable to all nights regardless of specials.

CHECK-IN/CHECK-OUT TIMES AND LODGE CLOSURE

- Sungani Lodge is open Mid May - Mid November
- We will operate a Green Season only at Sungani Lodge from late January – late March subject to:
 - A minimum of 6 pax.
 - Booking for this season must be confirmed/paid at least 4 months in advance.
 - Booking requires a 4 night minimum stay.
- Kulandila Camp is open Mid May – Late October
- Check-in: We endeavour to have your tent ready on arrival. Should there be a turnaround, we will ensure you are not kept waiting long.
- Check out: Will be at 10:00 on the date of departure. When availability allows early or late check-in / out are possible at no extra charge.

PAYMENT OPTIONS

- Our rates are quoted and payable in USD (American Dollars). Direct transfers can be made into our bank account – this is our preferred method of collections.
- Final balance payments will be invoiced and must be transferred to our account.
- We respectfully request payments be made in full and free of any bank charges.



.011 TALK TO US

FOR RATES AND AVAILABILITY, PLEASE CONTACT OUR RESERVATIONS
OFFICE WHICH IS BASED IN THE UNITED KINGDOM.

EMAIL: reservations@sungani.com

TEL / WHATSAPP: +44 7760 966011



@_SUNGANI_



SUNGANI

SUNGANI.COM



S 13°27'55.69"

E 31°23'14.86"